

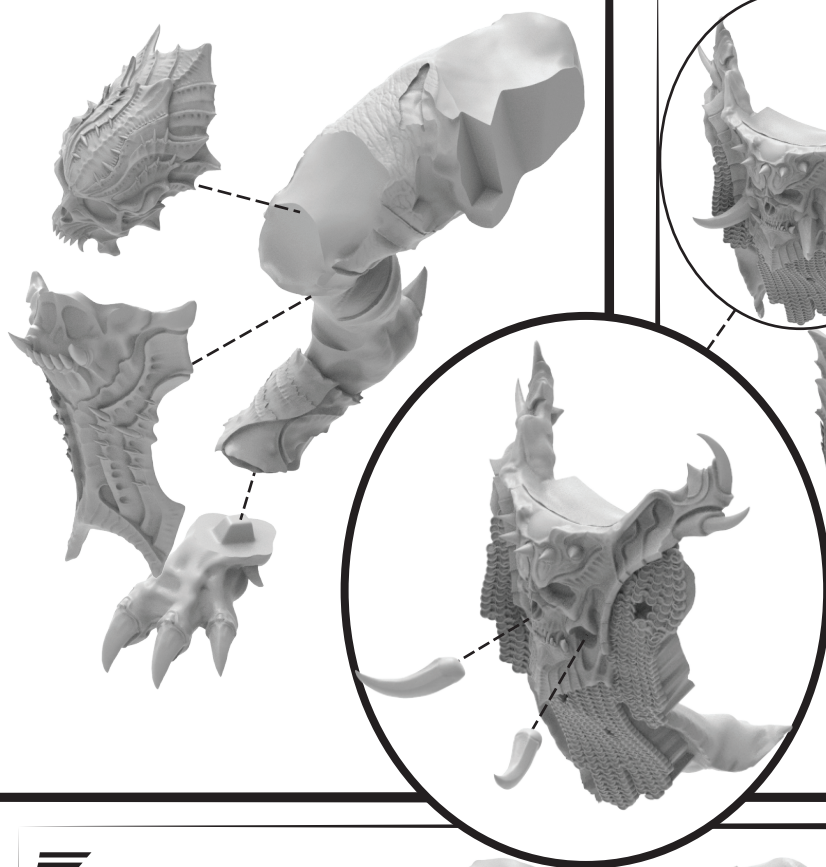


1. Resin is durable and will last a very long time so long as it is not exposed to harsh temperatures or direct sunlight for long periods of time. When you are ready to start working on your model, make sure you wash all the parts with room temperature water and some dish soap. This will remove the residual releasing agent and make gluing and painting possible.

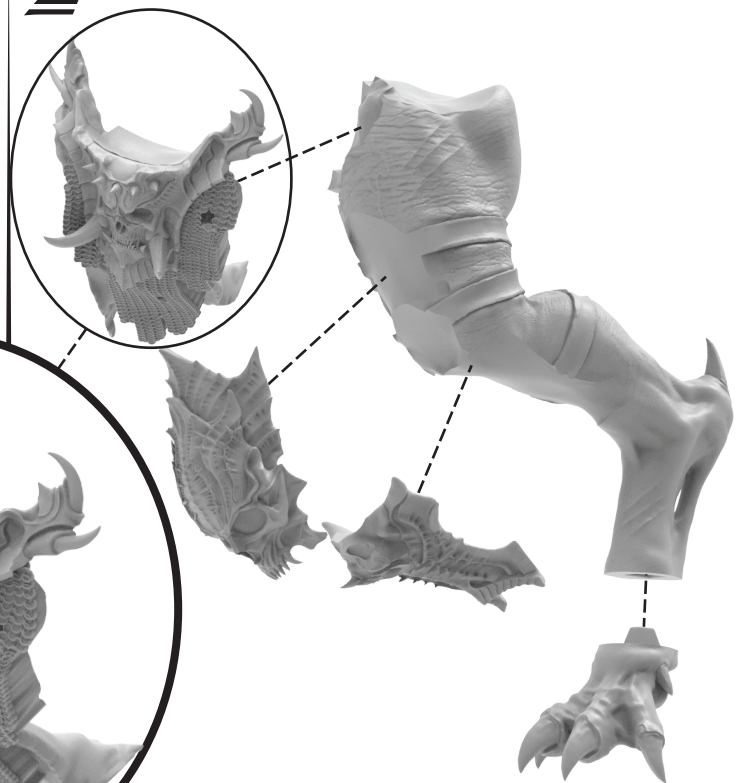
2. When constructing resin models it is recommended that you lightly scuff the joining surfaces in order to achieve maximum bond.

3. We recommend you use model clippers, a set of fine files and/or high grit sandpaper, a hobby knife and superglue to achieve the best results in the construction of this model.

1



2

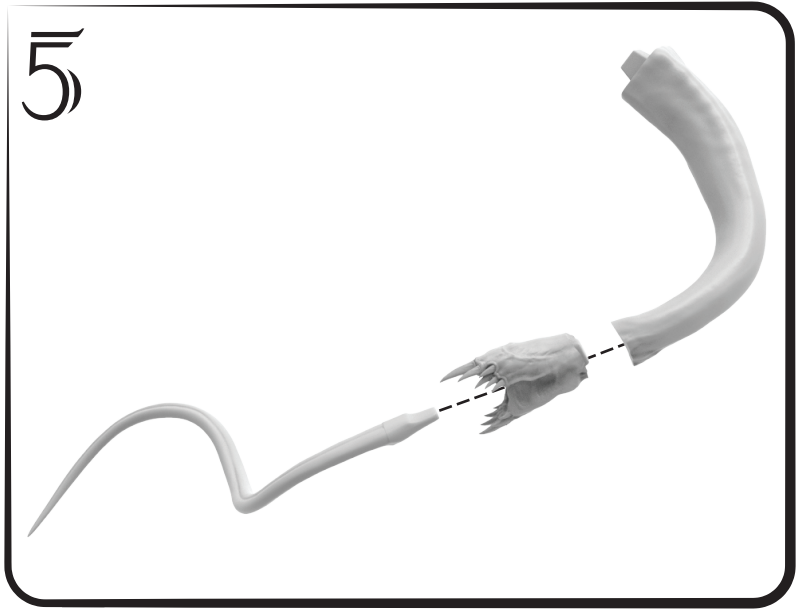
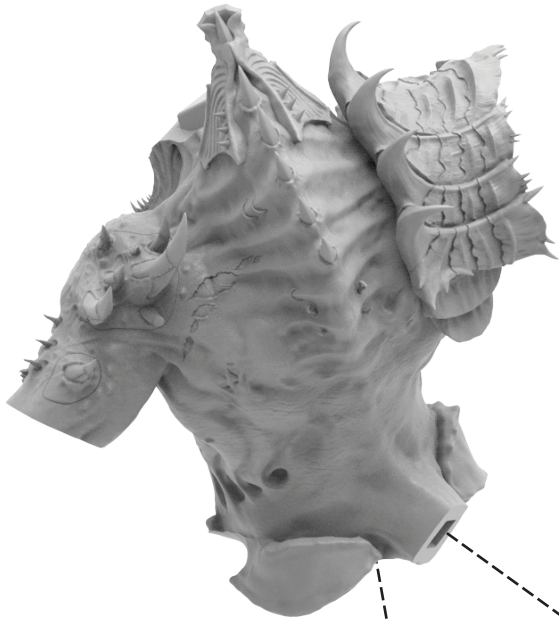


3

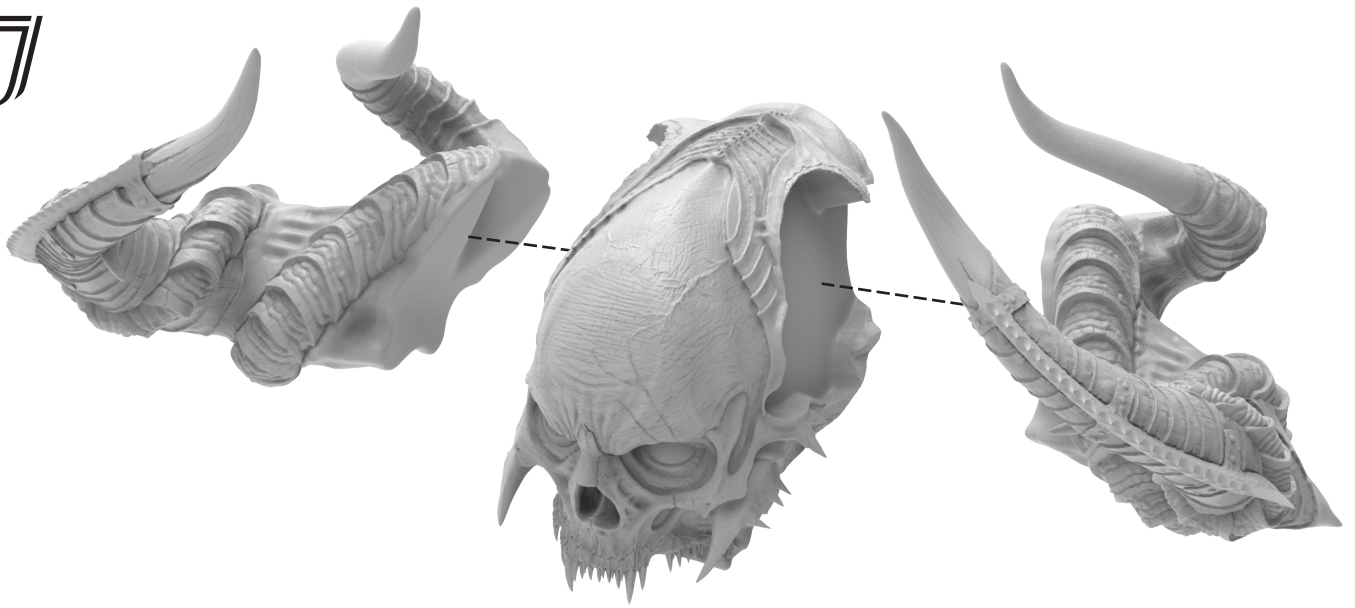




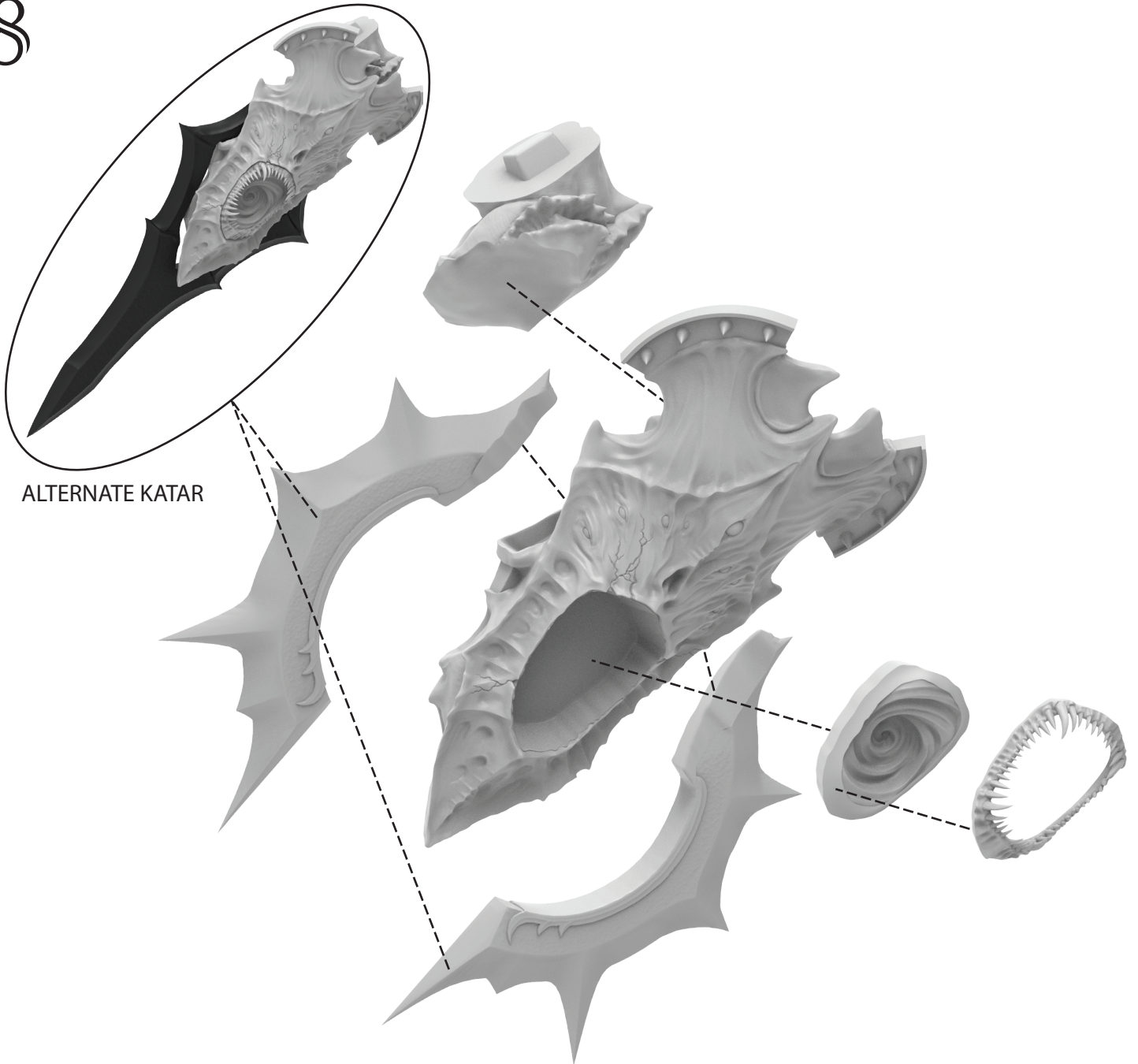
6



7



8



ALTERNATE KATAR

9)



10)





ALTERNATE AXE ARMS

